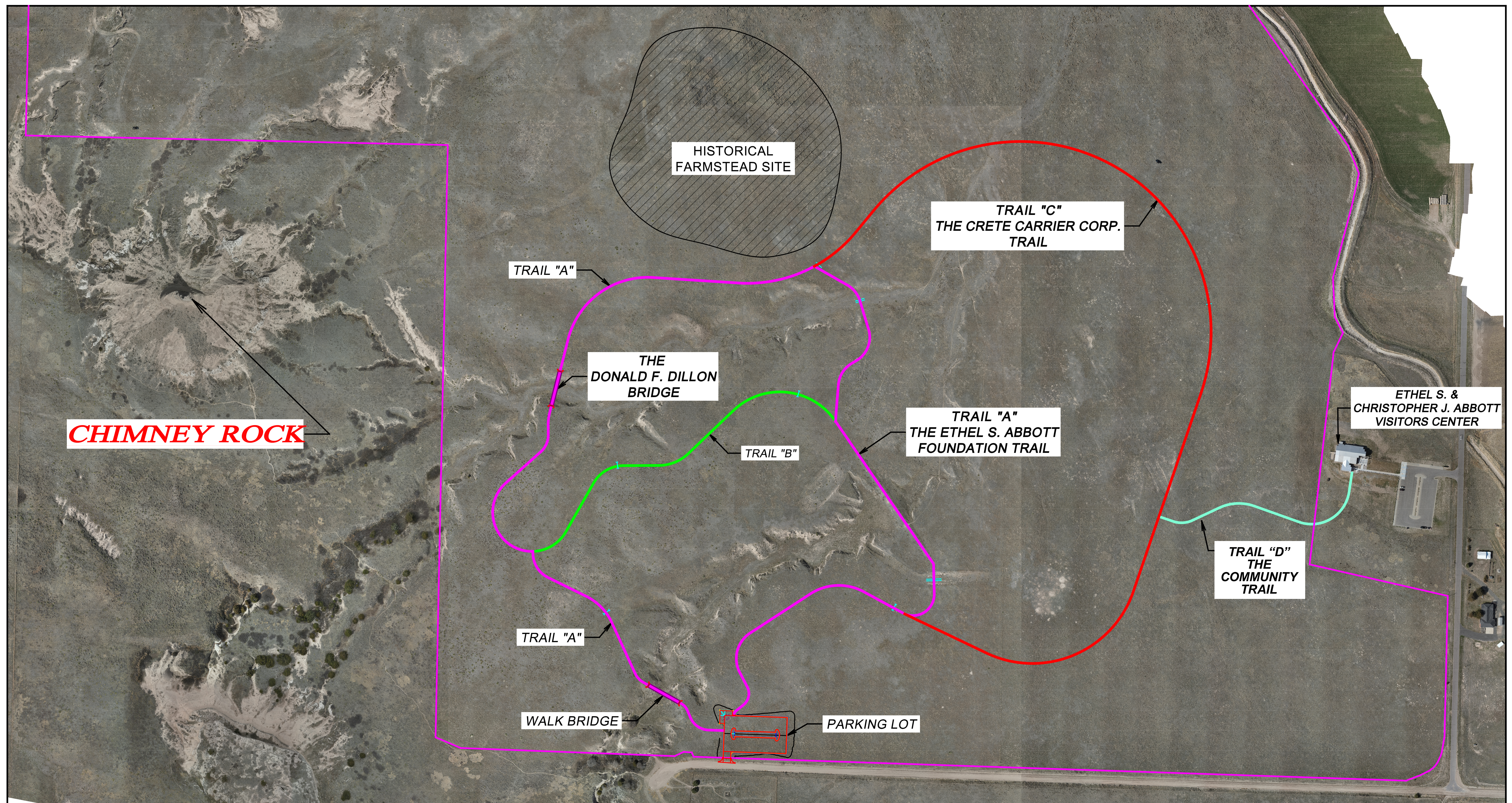


# WELCOME TO WALK TO THE ROCK!



## TRAIL DISTANCES:

- TRAIL "A" = 1.05 MI.
- TRAIL "B" = 0.26 MI.
- TRAIL "C" = 0.75 MI.
- TRAIL "D" = 0.16 MI.

THIS PROJECT WAS MADE POSSIBLE BY  
THE NEBRASKA STATE HISTORICAL SOCIETY FOUNDATION  
AND THEIR GENEROUS DONORS



## PATHWAY RULES:

Walk to the Rock is private property of the Nebraska State Historical Society Foundation (NSHSF). Walk to the Rock is open to the public for recreational purposes only, subject to the following rules:

**BASICS:** Trails are open from dawn to dusk for recreational use by the public at no charge. Stay on trails. Dogs must be on a leash. Clean up after yourself/your pet; pack in pack out. Do not disturb rocks, vegetation, wildlife, or artifacts.

**RISKS:** Prairie habitat is inhabited by rattlesnakes and other dangerous species. Trail contains uneven surfaces and steep slopes. Visitors assume all risks; NSHSF disclaims liability to the maximum extent allowed by law.

**PROHIBITED:** Camping, Hunting/Trapping/Target Shooting, Fires, Bicycles, Horses, Motorized Vehicles (exception: motorized scooters/wheelchairs for individuals with a disability are permitted on all Trails), Littering, Alcohol, Illicit Drugs, Vending/Solicitation, Vandalism/Destruction. Violators will be prosecuted to the fullest extent of the law.

**SAFETY:** Know your limits and distance to the parking area. Stay hydrated. Use sunscreen and insect repellent. Watch your step. In an emergency call 911.